

Technical Specifications

SWIFT-FX PSPL 16CH Splitter Terminal

HODT-PSPL-0116-SA-SA

Mating method	Distribution	Connector type
Push-Pull type	1x16 PLC Splitter	SC/APC

1. General

UCL's PSPL hardened terminal series are designed to fit the diverse FTTH OSP environment with Push-Pull mating technology that gives easy and quick mating process comparing with screw type connecting mechanism of conventional hardened terminal and compact size which enhances the accessibility into the small space facility

HODT-PSPL-0116 series accommodate 1x16 PLC Splitter that one input signal is distributed to the four subscribers and are mountable at various OSP application, Pole, Strand, Wall, and Handhole



2. Features and Benefits

- *Easy, Quick and Simple Access*

Push-Pull mating technology gives operator at the field easy access to the terminal instead of screw type conventional hardened terminal

- *Compact Size*

Compact size comparing with conventional terminal, It can be adopted at small space facility like Handhole, Pedestal installation

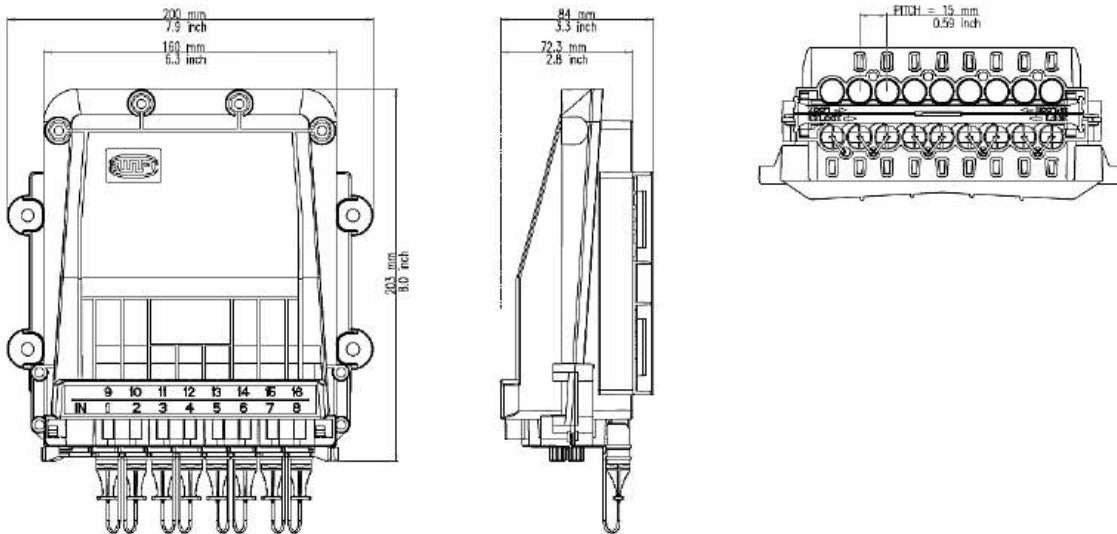
- *Any Place Installation*

Desigend to withstand the rugged outside plant environment and can be installed at the optimized position in order to minimize the total drop cable length

3. Products Configuration

General	Input port	1 port, SC/APC, Push-Pull type hardened connector
	Optical distribution	1x16 PLC Splitter
	Output port	16 ports, SC/APC, Push-Pull type hardened connector
	Dimension(HxWxD)	203x200x84 mm (Including mounting bracket)
	Installation	Pole, Wall, Strand, Handhole, Pedestal
Optical	Insertion Loss	Max. 13.7dB
	Return Loss	Min. 60dB
IP Classification		IP68

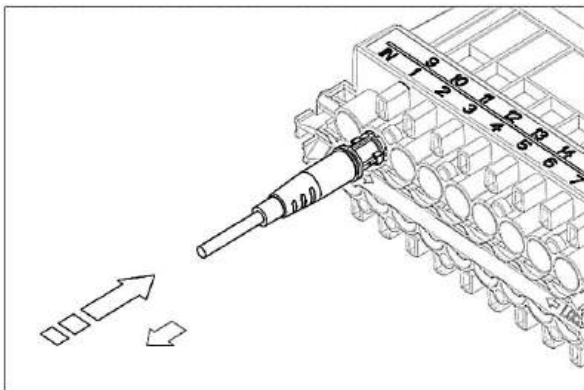
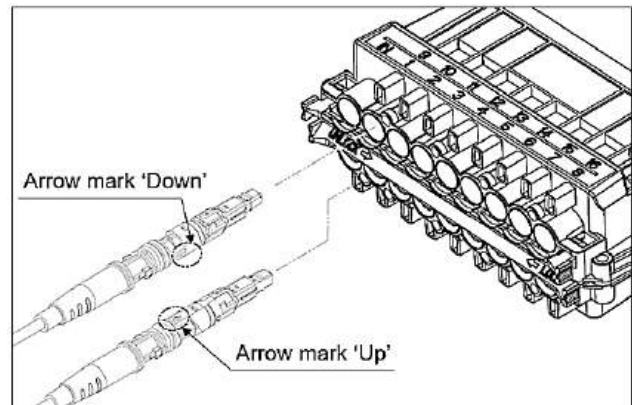
4. Drawing



5. Push & Pull mating mechanism

• Connecting Hardened Push-Pull Connector to HODT-PSPL

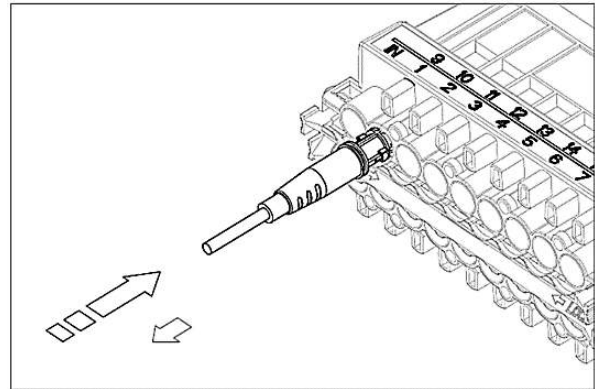
- 1) Slide the locking bar to the UNLOCK direction
- 2) Make sure 'arrow mark' Up at the lower layer ports and 'arrow mark' Down at the upper layer ports before connecting PSPL hardened connector



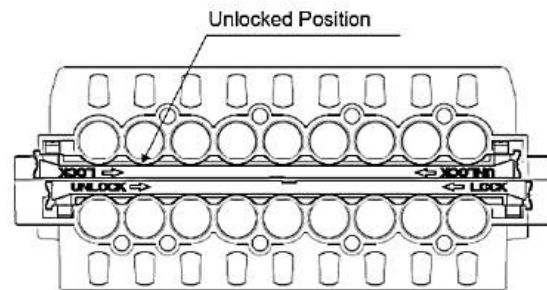
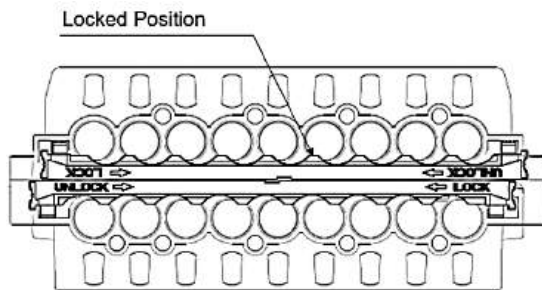
- 3) Make sure connecting properly with pulling back
- 4) Slide the locking bar back to the LOCK direction

• *Disconnecting Hardened Push-Pull Connector from HODT-PSPL*

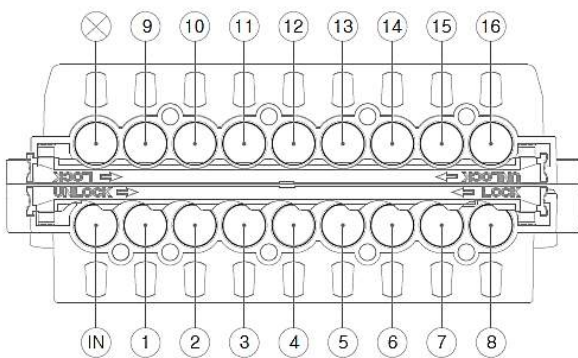
- 1) Slide the locking bar to the UNLOCK direction
- 2) Push the connector forward then pull it back
- 3) Slide locking bar back to the LOCK direction to secure the rest of ports



• *Locking bar Position (Locking & Unlocking)*



6. Port Configuration



Port	IN	1	2	3	4	5	6	7	8
Function	Input	Drop1	Drop2	Drop3	Drop4	Drop5	Drop6	Drop7	Drop8
Port	NA	9	10	11	12	13	14	15	16
Function	NA	Drop9	Drop10	Drop11	Drop12	Drop13	Drop14	Drop15	Drop16
Interface	PSPL								
Connector	SC/APC								

7. Ordering Information

Part Number	Description
HODT-PSPL-0116-SA-SA	Hardened PSPL Splitter Terminal, 1x16 PLC Splitter, Push-Pull mating with mounting bracket for wall and handhole
MG-PL00-A	Mounting gear, Pole bracket (Wire band)
MG-ST00-A	Mounting gear, Strand mounting bracket
MG-ST00-B	Mounting gear, ADSS(Cable) mounting bracket
MG-SW00-A	Mounting gear, Swing bracket

8. Related Products

Classification	Product Number	Description
Hardened Fusion SOC PSPL type	HFSOC-A2/P-SC/APC-PSPL-5000	G.657.A2, Pre-Cleaved SC/APC , Push-Pull type, Assembly with 5.0mm round cable
	HFSOC-A2/P-SC/APC-PSPL-5020	G.657.A2, Pre-Cleaved SC/APC , Push-Pull type, Assembly with 5.0x2.0mm flat cable
	HFSOC-A2/P-SC/APC-PSPL-5430	G.657.A2, Pre-Cleaved SC/APC , Push-Pull type, Assembly with 5.4x3.0mm cable
	HFSOC-A2/P-SC/APC-PSPL-6100	G.657.A2, Pre-Cleaved SC/APC , Push-Pull type, Assembly with 6.1mm round cable
	HFSOC-A2/P-SC/APC-PSPL-8145	G.657.A2, Pre-Cleaved SC/APC , Push-Pull type, Assembly with 8.1x4.5mm flat cable
Drop Cable	DRC-RD-ML5000B-LZ300901	5.0mm round, Double jacket, MDPE & LSZH
	DRC-FLAT-LZ5020B-FRSL2501	5.0x2.0mm Flat, FRP, Solid wire, LSZH
	DRC-FLAT-PE8145B-PV29PV0901	8.1x4.5mm Flat, All-Dielectric, PE

9. Documents

Document Number	Description
IG-HODT-0116-WL/HL	Installation manual on the Wall and Handhole
IG-HODT-0116-PL	Installation manual on the Pole
IG-HODT-0116-ST	Installation manual on the Strand