

# Technical Specifications

## SWIFT-FX PSPL 2 Ports Stub Terminal

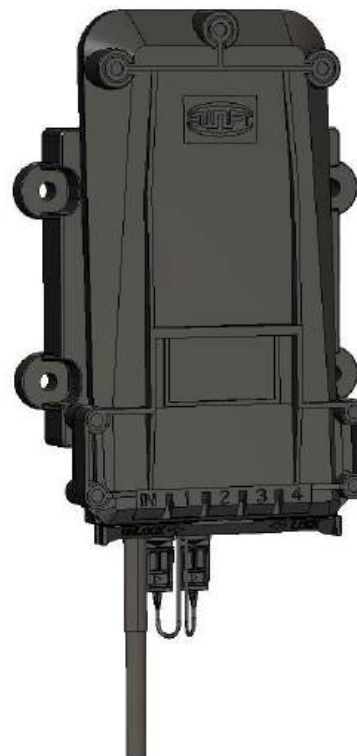
### HODT-PSPL-0002-ST/2/L/N-SA

Mating method	Distribution	Input	Output
Push-Pull type	Point to Point	Stub	SC/APC

## 1. General

UCL hardened terminals use a distinctive Push-Pull mating technology that allows easy and quick mating process compared to conventional screw type terminal.

HODT-PSPL-0002 Stub terminal breaks out a multiple fibers input cable(Stub) into discrete single output ports in order to support P2P(Point to Point) application. Stub Terminal is installed at nearest point to the subscribers and stub cable goes into the centralized point(FDH) or closure



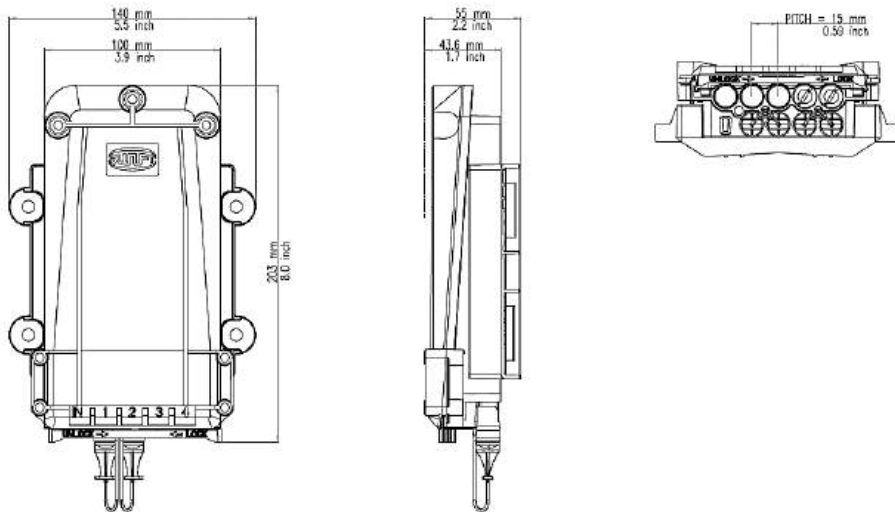
## 2. Features and Benefits

- **Easy, Quick and Simple Access**  
Push-Pull mating technology gives operator at the field easy access to the terminal compared to conventional screw type.
- **Compact Size**  
Compact size compared to conventional terminals.  
Mountable at small space facilities like Handhole, Pedestal installation.
- **Any Place Installation**  
Desigend to withstand the rugged outside plant environment and installable at optimized position in order to minimize the total drop cable length.

## 3. Products Specification

General	Stub (Input) port	2 core, Flat(8.1x4.5mm) cable
	Stub length(m)	20 ~ 500
	Output port	2 ports, SC/APC, Push-Pull type hardened connector
	Dimension(HxWxD)	203x140x55 mm (Including wall mounting bracket)
	Installation	Pole, Wall, Strand, Handhole, Pedestal
Optical	Insertion Loss	Max. 0.5dB
	Return Loss	Min. 60dB
IP Classification		IP68

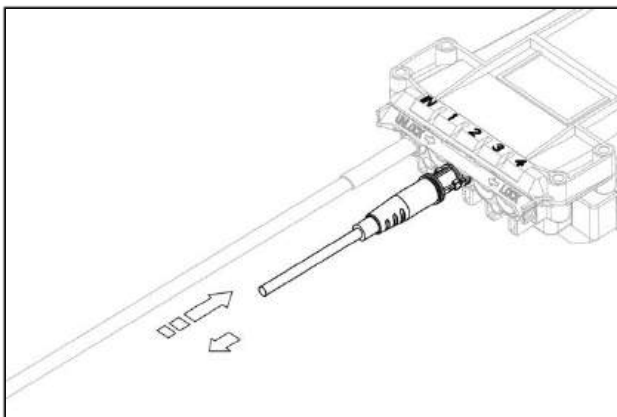
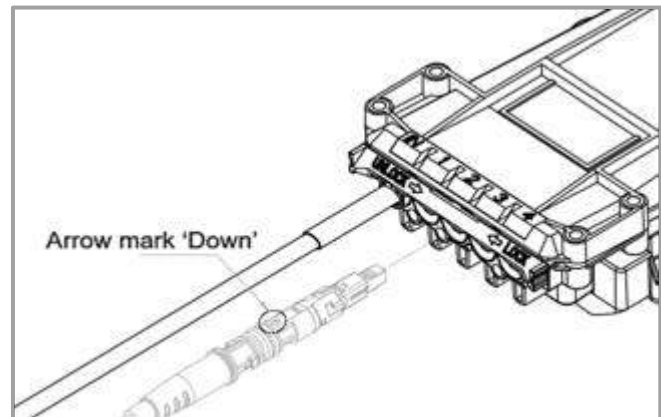
#### 4. Drawing



#### 5. Push & Pull mating mechanism

##### • Connecting Hardened Push-Pull Connector to HODT-PSPL

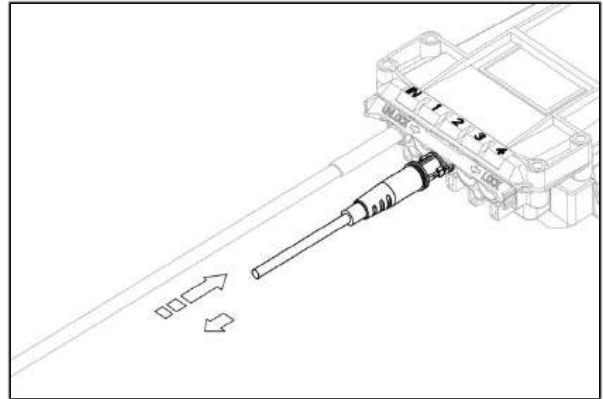
- 1) Slide the locking bar to the UNLOCK direction
- 2) Make sure 'arrow mark' up before connecting the PSPL hardened connector to the Input and output ports.



- 3) Make sure connecting properly with pulling back
- 4) Slide the locking bar back to the LOCK direction

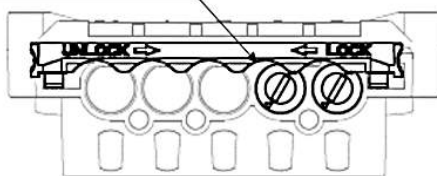
• *Disconnecting Hardened Push-Pull Connector from HODT-PSPL*

- 1) Slide locking bar to the UNLOCK direction.
- 2) Push the connector forward then pull it back
- 3) Slide locking bar back to the LOCK direction to secure the rest of ports

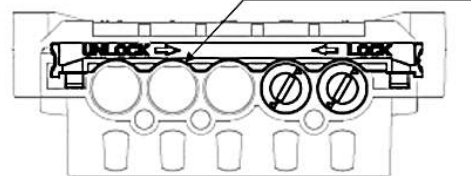


• *Locking bar Position (Locking & Unlocking)*

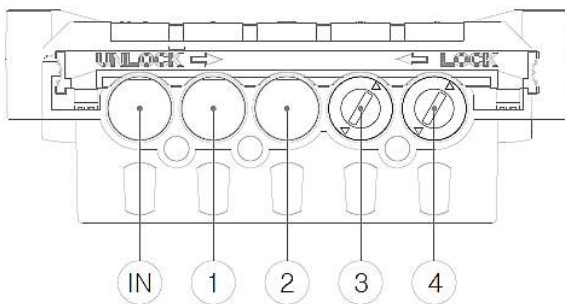
Locked Position



Unlocked Position



6. Port Configuration



Port	IN	1	2	3	4
Function	Stub	Drop1	Drop2	NA	NA
Interface	PSPL				
Connector	SC/APC				

## 7. Ordering Information

Part Number	Description
HODT-PSPL-0002-ST/2/L/N-SA	Hardened PSPL Stub Terminal, Point to Point(P2P), Input Stub : 8145(2fibers), L : length, N : without connector, Drop : 2 ports PSPL
MG-PL00-A	Mounting gear, Pole bracket (Wire band)
MG-ST00-A	Mounting gear, Strand mounting bracket
MG-ST00-B	Mounting gear, ADSS(Cable) mounting bracket

## 8. Related Products

Classification	Product Number	Description
Hardened Fusion SOC PSPL type	HFSOC-A2-SC/APC-PSPL-5000	G.657.A2, SC/APC , Push-Pull type, Assembly with 5.0mm round cable
	HFSOC-A2-SC/APC-PSPL-5020	G.657.A2, SC/APC , Push-Pull type, Assembly with 5.0x2.0mm flat cable
	HFSOC-A2-SC/APC-PSPL-5430	G.657.A2, SC/APC , Push-Pull type, Assembly with 5.4x3.0mm cable
	HFSOC-A2-SC/APC-PSPL-4824	G.657.A2, SC/APC , Push-Pull type, Assembly with 4.8x2.4mm flat cable
	HFSOC-A2-SC/APC-PSPL-8145	G.657.A2, SC/APC , Push-Pull type, Assembly with 8.1x4.5mm flat cable
Drop Cable	DRC-PE5000B-PV2709-A201	5.0mm round, Double jacket, MDPE & PVC
	DRC-LZ5020B-FR-SL-A2B01	5.0x2.0mm Flat, FRP, Solid wire, LSZH
	DRC-PE4824B-FR00-P09-A201	4.8x2.4mm Flat, All-Dielectric, PE
	DRC-PE8145B-FR00-P29KVP09-A201	8.1x4.5mm Flat, All-Dielectric, PE
Stub Cable	DRC-PE8145B-FR00-PB30GF-A202	8.1x4.5mm Flat, All-Dielectric, PE jacket, Gel-filled, 2core

## 9. Documents

Document Number	Description
IG-HODT-WL/HL	Installation manual on the Wall and Handhole
IG-HODT-PL	Installation manual on the Pole
IG-HODT-ST	Installation manual on the Strand